

the blender in a nutshell

all the facts and figures you need to know



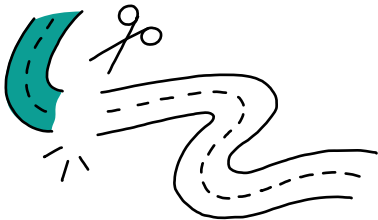
the blender has capacity to produce **300 million litres** of chilled juice and smoothies per year.



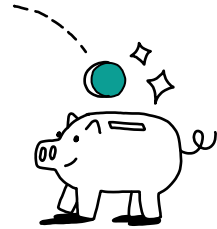
We are the **first company** to open on **The Food Hub** in the port of Rotterdam.



A great place to work for **over 200 employees**.



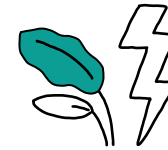
the blender will take **20% of truck KMs** off the road.



We invest **225 million euros** in the blender.



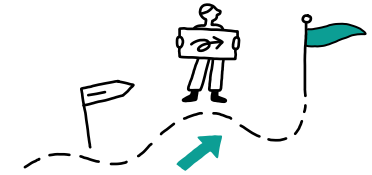
the blender is better for **people, the planet, and business**.



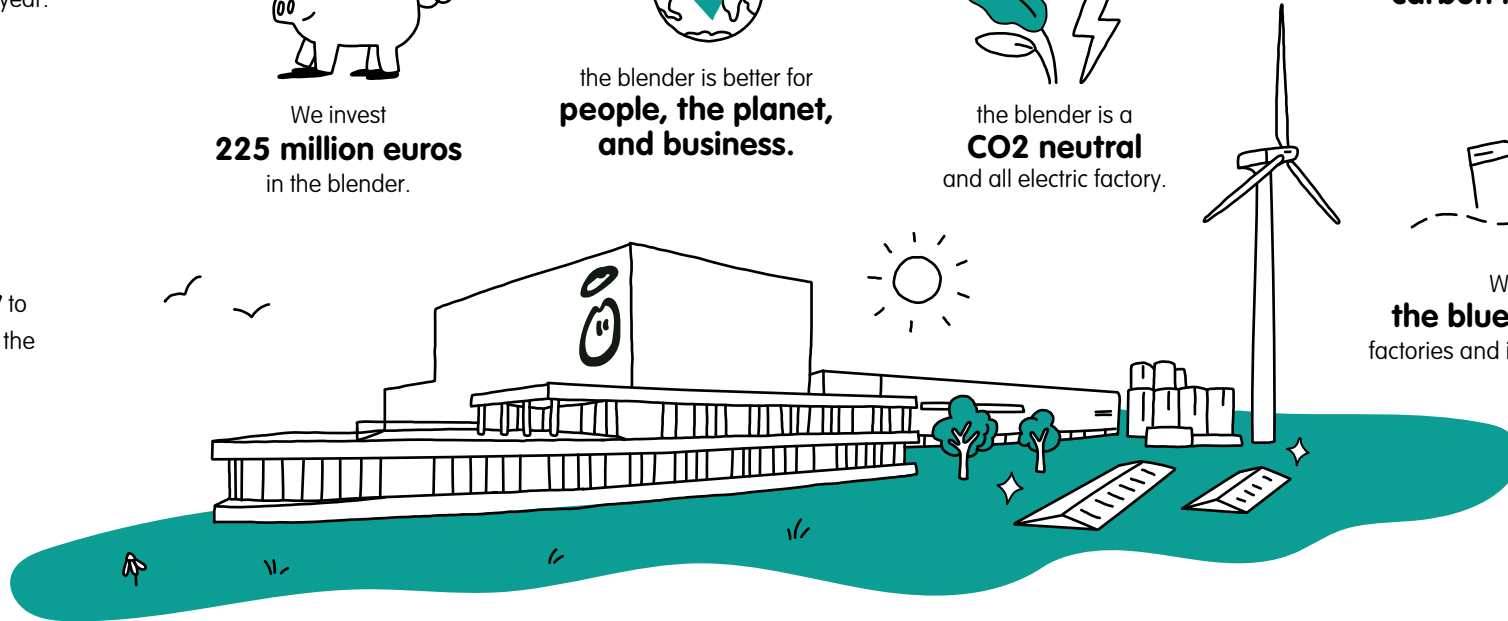
the blender is a **CO2 neutral** and all electric factory.



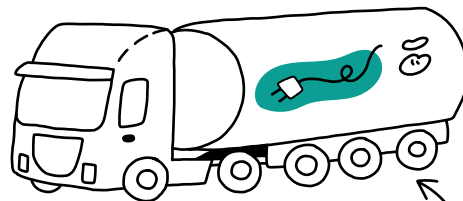
the blender plays a key role in reaching our goal of being **carbon neutral in 2025**.



We want to be **the blueprint** for sustainable factories and inspire other companies.



We use the first **100% battery electric, 50 tonne gross vehicle** to transport our bulk orange juice from the storage facility to the factory.



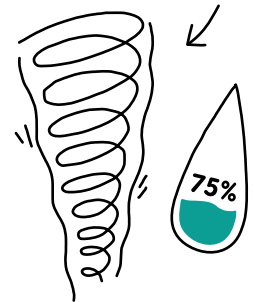
Not just a single truck, but our complete OJ bulk fleet.

the blender has been built in line with **sustainable building standards BREEAM**.

We are well on track to be the first **WELL certified factory** in the world



Not an actual tornado.



Our snazzy 'air tornado' cleaning system will **reduce our water usage** by **75%** compared to conventional systems.